

ALLDAY  
& MILLER



Rodmell Close, Hayes, UB4 9RS  
£450,000

2 1 1 D



## Rodmell Close, Hayes, UB4 9RS

**£450,000**

- Detached
- Newly Renovated Bathroom & Kitchen
- Garage
- Gas Central Heating
- Quiet Cul-De-Sac Location
- Freehold
- Off street parking
- Two Double Bedrooms
- Close To Yeading Marina
- Potential To Extend STPP

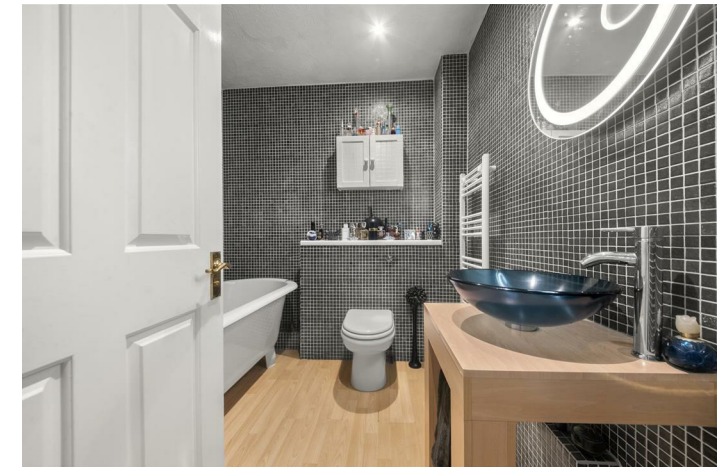
## Description

This stylish family home comprises of an entrance porch, two bedrooms, family bathroom suite, a modern fitted kitchen with dining area and a reception room which overlooks and provides access to the rear.

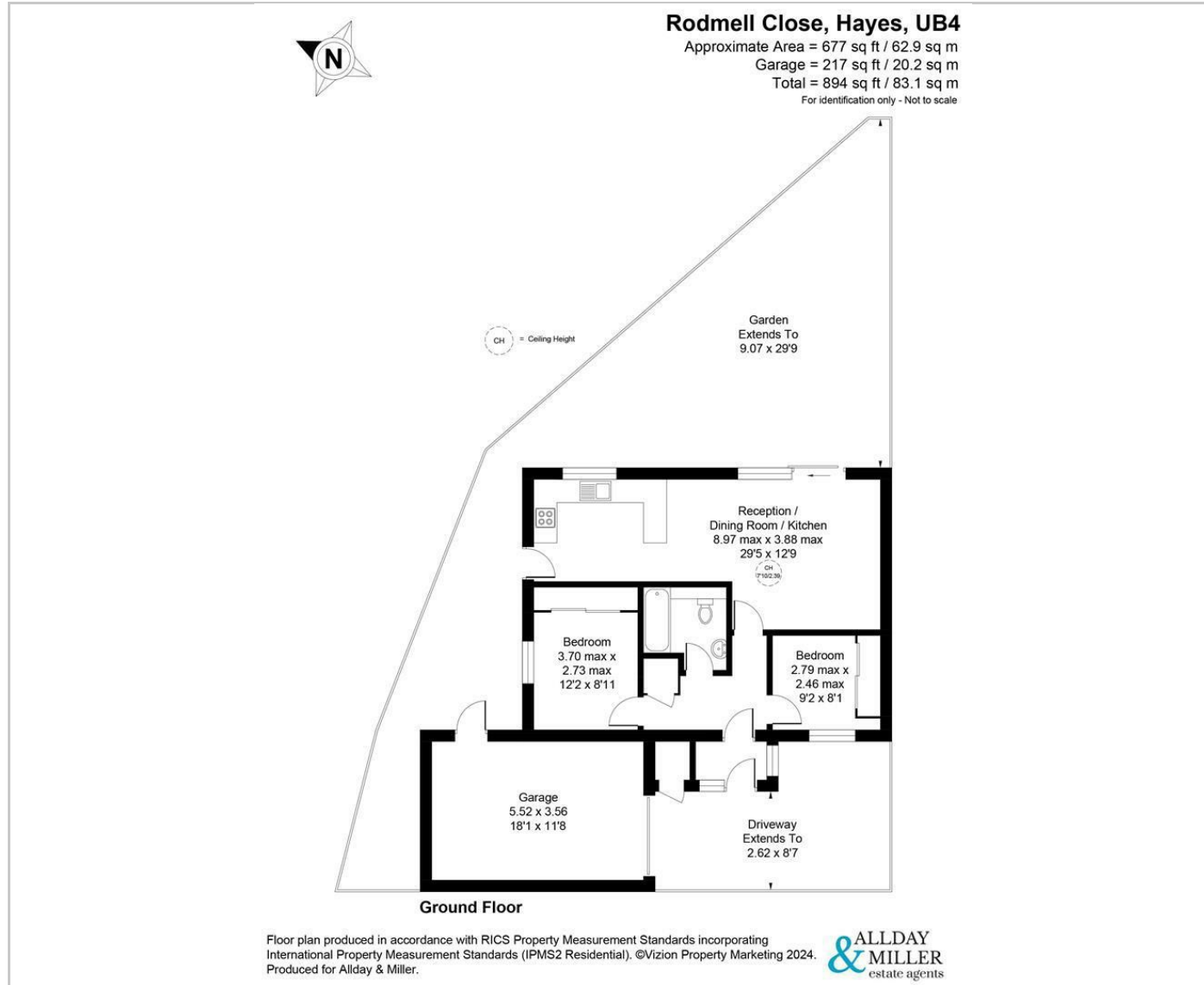
The property benefits from a front driveway space and access to the garage. To the rear private garden mainly laid to lawn with a patio area.

## Situation

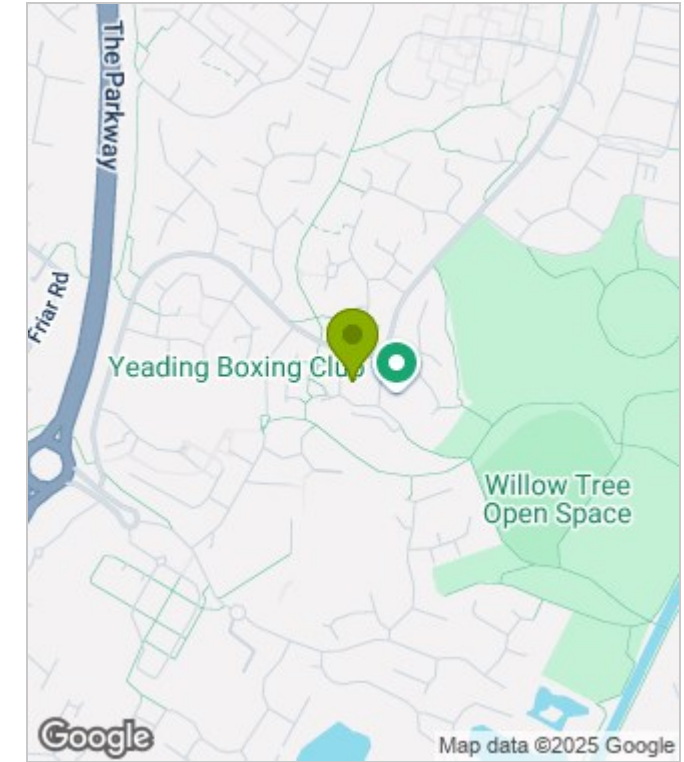
Rodmell Close in prime location and just a short distance to local shops, coffee shops and restaurants/ Yeading Marina. The location offers easy access to good transport links and the M4/M40/M25 motorways. There is also a vast array of highly regarded primary and secondary schools close by including Hayes Park school and Park Academy. Hayes & Harlington station just moments away with the Elizabeth line giving several links to central London and the surrounding counties.



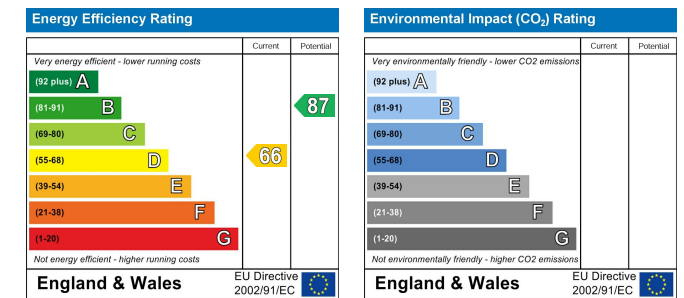
## Floor Plans



## Area Map



## Energy Performance Graph



These particulars, whilst believed to be accurate are set out as a general outline only for guidance and do not constitute any part of an offer or contract. Intending purchasers should not rely on them as statements of representation of fact, but must satisfy themselves by inspection or otherwise as to their accuracy. No person in this firm's employment has the authority to make or give any representation or warranty in respect of the property.